



AFRICAN VISION

WT002

30442504



# AFRICAN VISION

## CLASSIFICATION

DNV + 1A1 , EO, SF, DYNPOS AUTR, Clean DK+  
Comf—V (3) Supply Vessel, LFL , HL (2.8) Naut OSV (A).

Owner:	Marine Platforms Ltd
Builder:	Keppel yard, Singapore, March 2010
Retrofitted:	Kleven yard, Norway, March 2012
Designer:	Marine Teknik, MT6012
LOA:	93.60m
Breadth:	19.70m
Draughts:	6.30m
Gross Tonnage:	4850 tonnes
Net Tonnage:	1450 tonnes
Speed:	13.6 kn
IMO Number:	9463504
Call Sign:	5NVH
Flag:	Nigerian
Shipman:	Vships
Technical Mgt:	Vships

## DP SYSTEM

One fully automatic DP system AUTR with Redundancy in positioning reference and thrusters control DP class 2

## ROV SYSTEMS

2 x 150 HP Triton XLX ROV system, 3000m rated and 600 m tether excursion

Fitted with Schilling T4 and Rigmaster manipulators

## CONTROL SYSTEM

ICE TM Real Time Control System with Gb Telemetry and Graphical Diagnostics

## CAPACITIES

Deck cargo:	3400t
Deck strength:	10t/m <sup>2</sup>
Fuel oil:	1,088m <sup>3</sup>
Fresh Water:	1,000m <sup>3</sup>
Liquid mud	640 m <sup>3</sup>
Slop ( wash):	43 m <sup>3</sup>
Slop:	80 m <sup>3</sup>
Brine:	240 m <sup>3</sup>
Drill water:	1.213 m <sup>3</sup>
Methanol:	217 m <sup>3</sup>
Dry Bulk (Cement, Barite):	298 m <sup>3</sup>
	as separate tanks doesn't exist it is Mud tanks

- 100 tonnes AHC crane
- Helideck for Sikorsy S92
- Working moonpool
- 66 POB
- 1000 square metres deck space including mez deck
- Removable wingwall on Port side
- Mezanine deck carrying two 150 hp XLX workclass ROV systems
- Client Office Facilities
- Client conference room
- Sky Lobby (Helideck Reception & TV room)

## ACCOMMODATION

Total:	66 persons
Cabins:	16 x 1 single cabins
Cabins:	25 x 2 double cabins
Hospital:	1 off + 4 off wards
Project office:	4 persons
Client office:	4 persons
Conference room:	

## MACHINERY AND PROPULSION

Main azimuth thrusters:	2 x 2600kw
Bow thrusters:	3 x 1050 kw
Main Diesel engines:	4 x 2133 KW
Total:	8532 KW.
Emergency generator:	1 x 306 kw

## PERFORMANCE

Max speed:	14.5 knots
Econ speed:	12 knots at 10.2 t/day
DP Operation:	10 m <sup>3</sup> per day
Economic speed:	16m <sup>3</sup> per day

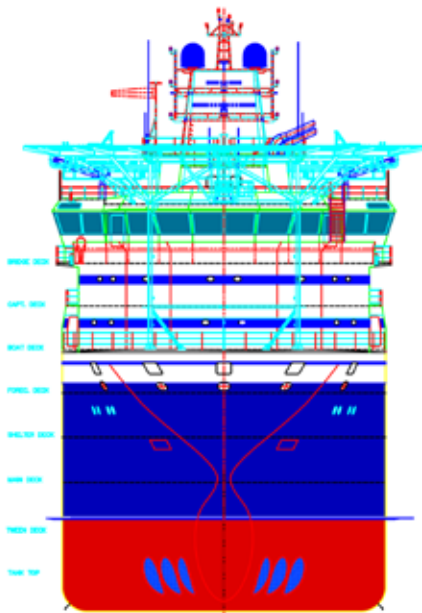
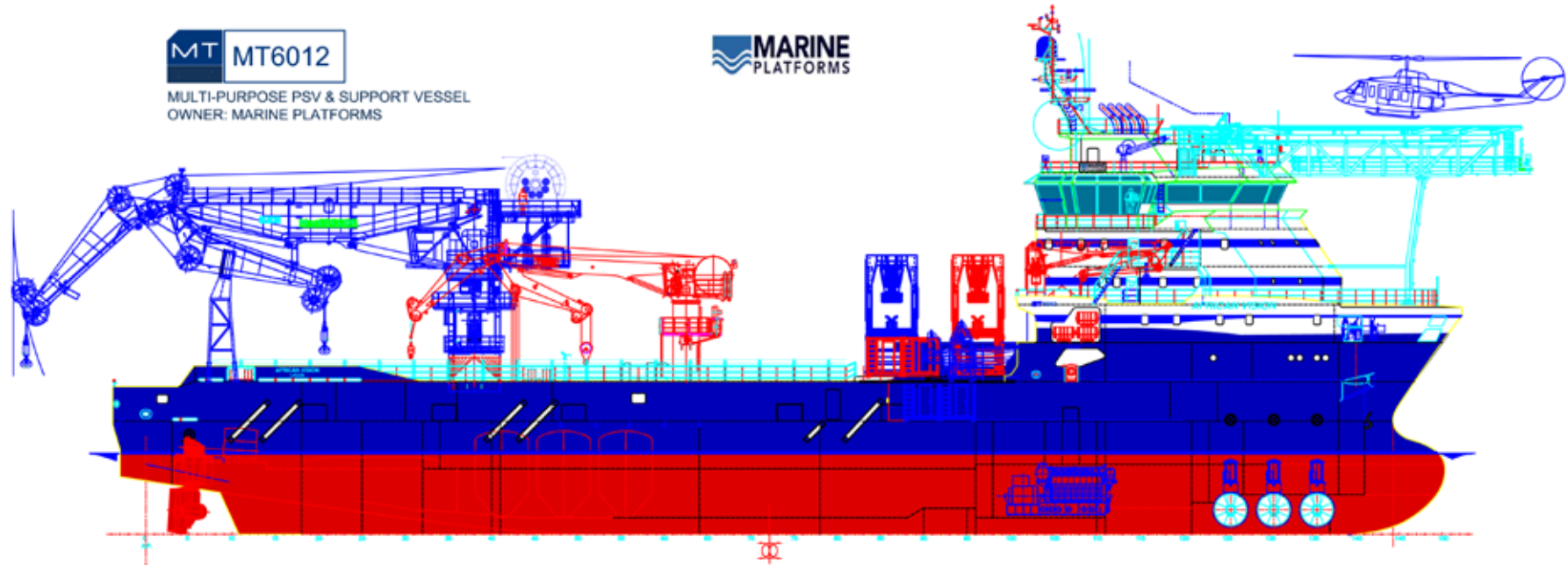
## OPTIONS

- FIFI 1
- Daughter craft
- Aux 22 tonnes AHC crane

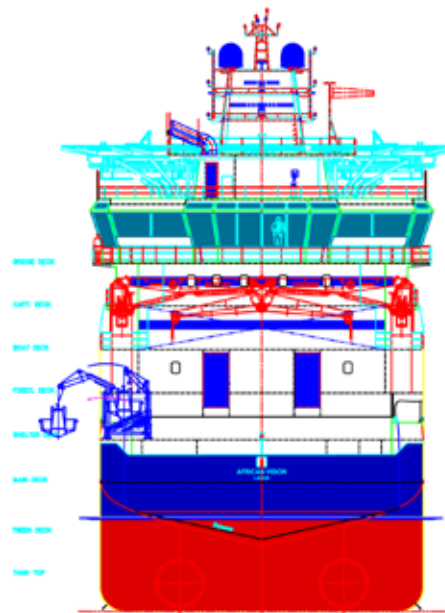
**MT** MT6012

MULTI-PURPOSE PSV & SUPPORT VESSEL  
OWNER: MARINE PLATFORMS

**MARINE**  
PLATFORMS



FRONT VIEW



AFT VIEW

**TANK TOP**

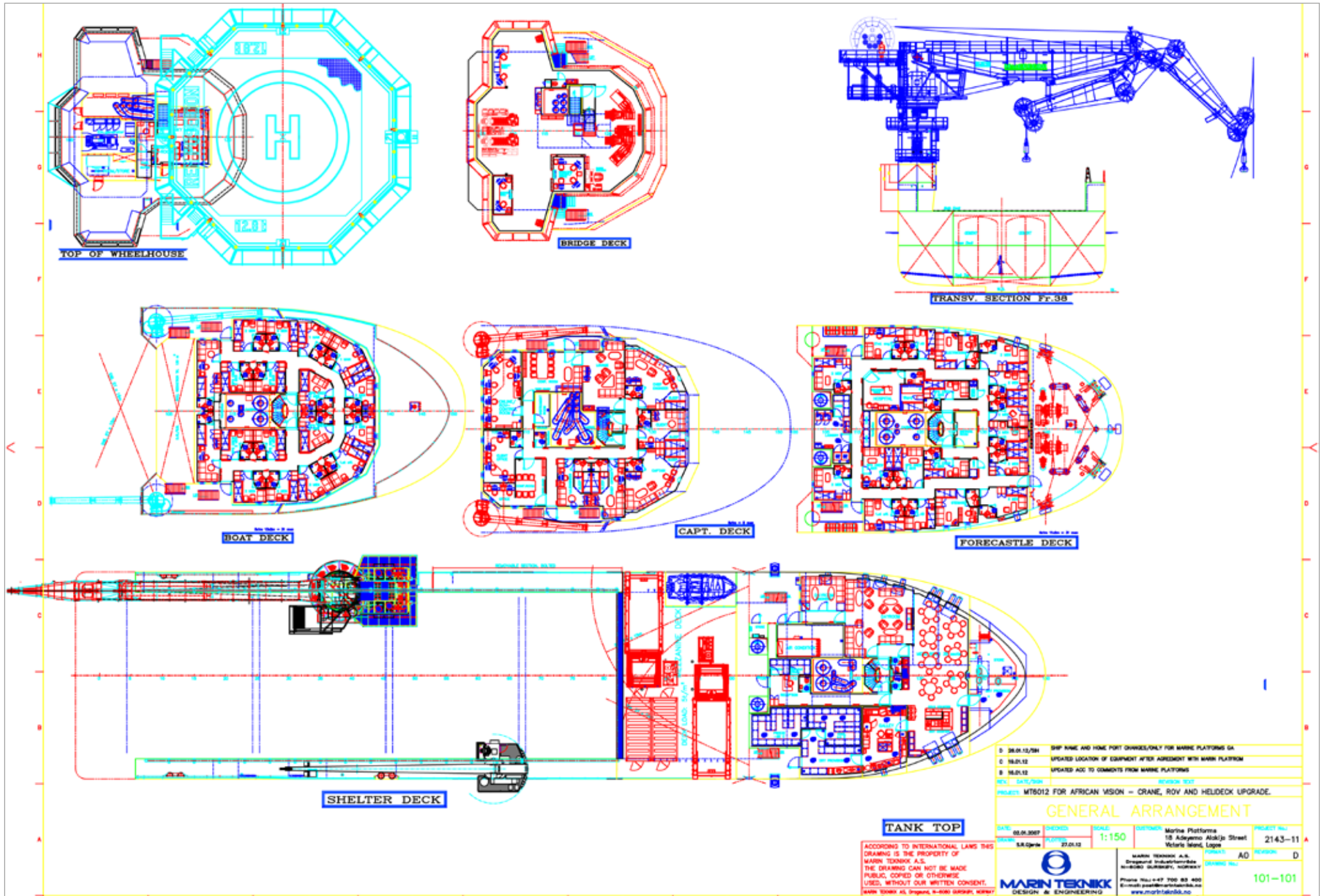
ACCORDING TO INTERNATIONAL LAWS THIS DRAWING IS THE PROPERTY OF MARIN TEKNIKK A.S. THE DRAWING CAN NOT BE MADE PUBLIC, COPIED OR OTHERWISE USED, WITHOUT OUR WRITTEN CONSENT.  
MARIN TEKNIKK AS, Dragørveien, 9-800 DRAGØR, NORWAY

D	28.01.13/SM	SHIP NAME AND HOME PORT CHANGED ONLY FOR MARINE PLATFORMS GA
C	16.01.12	UPDATED LOCATION OF EQUIPMENT AFTER AGREEMENT WITH MARIN PLATFORM
B	16.01.12	UPDATED ACC TO COMMENTS FROM MARINE PLATFORMS
REV	DATE/NO	REVISION TEXT
PROJECT: MT6012 FOR AFRICAN VISION - CRANE, ROV AND HELDECK UPGRADE.		

**GENERAL ARRANGEMENT**

DATE	09.01.2007	DRAWN	SCALE	1:150	OWNER	Marine Platforms	PROJECT NO.	2143-11
DESIGNER	SAR/Spr	DATE	27.01.12		ADDRESS	13 Adeyemo Akinku Street Victoria Island, Lagos	FORNIT	AD
					PHONE	+234 81 447 100 83 400	REVISION	D
					EMAIL	post@marinteknikk.no		101-100
								www.marinteknikk.no

**MARIN TEKNIKK**  
DESIGN & ENGINEERING



D. 30.01.2011 SHIP NAME AND HOME PORT CHANGED ONLY FOR MARINE PLATFORMS GA  
 C. 16.01.12 UPDATED LOCATION OF EQUIPMENT AFTER AGREEMENT WITH MARINE PLATFORMS  
 B. 16.01.12 UPDATED ACC TO COMMENTS FROM MARINE PLATFORMS  
 REV. DATE/NO. REVISION TEXT  
 PROJECT: MT8012 FOR AFRICAN VISION - CRANE, ROV AND HELDECK UPGRADE.

**GENERAL ARRANGEMENT**

DATE: 08.09.2007	CHECKED: 20.01.12	SCALE: 1:150	DRAWN: Marine Platforms	PROJECT No: 2143-11
BY: S.A. Grew			18 Kuleyeva Alak'ja Street, Varna, Blvd. Lige	REVISION: D
			MARIN TEKNIK A.S. Drozdova Industrijska Zona 6000 Varna, Bulgaria	101-101
			Phone No: +359 700 83 400 E-mail: <a href="mailto:marin@marin.bg">marin@marin.bg</a> <a href="http://www.marin.bg">www.marin.bg</a>	

**TANK TOP**

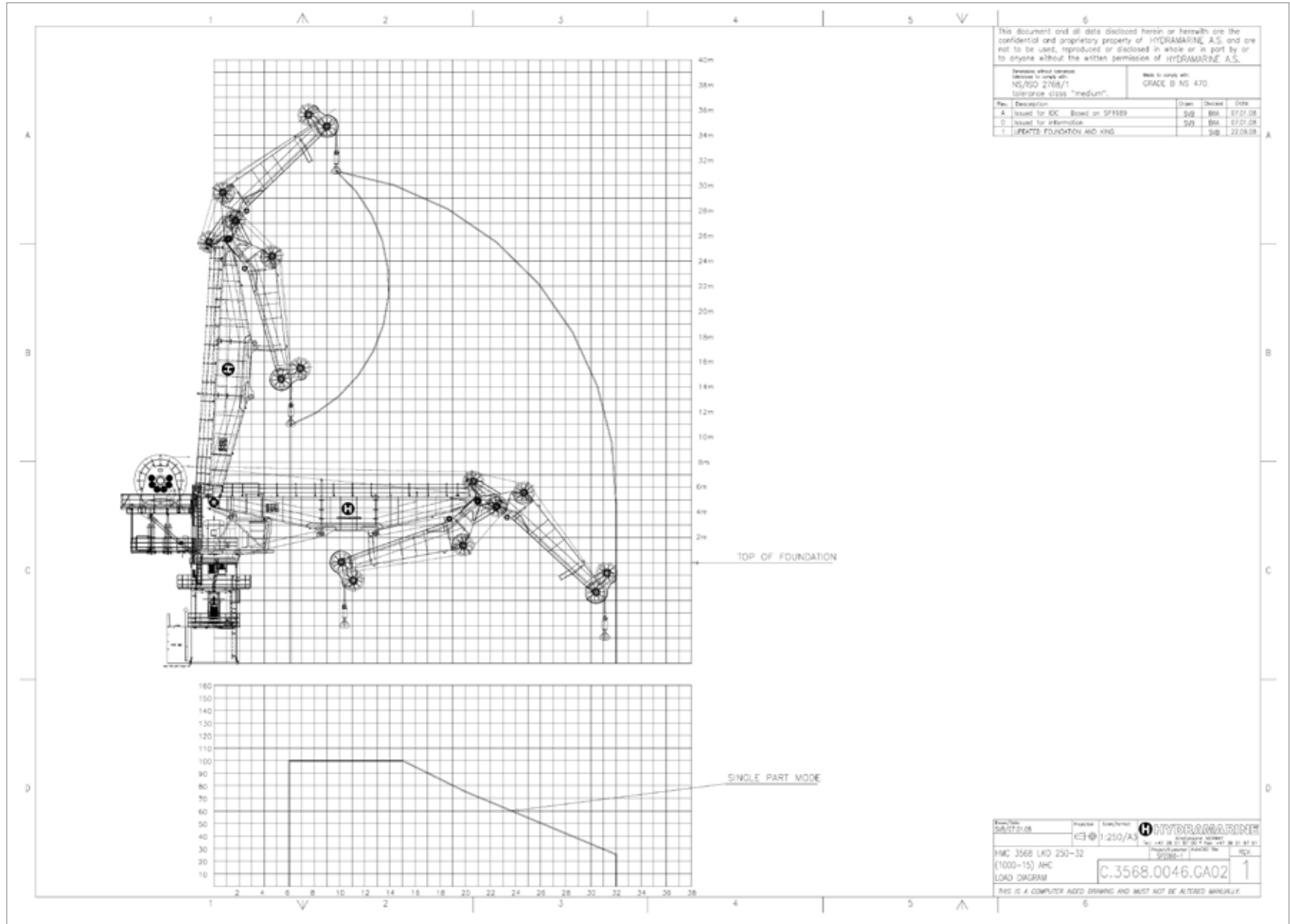
ACCORDING TO INTERNATIONAL LAWS THIS  
 DRAWING IS THE PROPERTY OF  
 MARIN TEKNIK A.S.  
 THE DRAWING CAN NOT BE MADE  
 PUBLIC, COPIED OR OTHERWISE  
 USED, WITHOUT OUR WRITTEN CONSENT.  
 MARIN TEKNIK A.S. Drozdova, B-6000 VARNNA, BULGARIA

# MAIN CRANE SPECIFICATION

100 tonnes Knuckle Jib  
Offshore Crane with  
Active Heave Compensation  
manufactured by  
Hydramarine.

**Lifting Capacities,**  
100 metric tonnes at 15m  
outreach

75 metric tonnes at 2000m  
water depth



**AUXILLARY CRANE SPECIFICATIONS**

22 tonnes at 10m Active  
Heave Compensated

Crane wire 2000m

