



AFRICAN INSPIRATION

MAIN DESCRIPTION

Type of Vessel:	Multipurpose Subsea Construction Vessel
Design Company:	Havyard
Yard Number:	115

MACHINERY

Main Engines:	5 x 2350 kW, Total 11750KW
Emergency Generator:	1 x175kW
Supply system– Voltage:	690V, 60Hz

CONSUMPTION

Max speed:	Approx 32m ³
Economic speed:	Approx 16m ³
DP Operation:	Approx 10m ³
St. By at sea:	Approx 5 m ³
Port consumption:	Approx 3 m ³

ACCOMODATION

A DECK:	26 Double and 2 of 4 man cabins
B DECK:	14 Single and 16 double cabins
D DECK:	14 Single cabins
Extensive office and conference facilities as per GA	

HELIDECK

Arranged for Super Pampa and Sikorsky S92 with D Value of 21 m , DNV class notation HELDK-SH

DYNAMIC POSITION

Class:	DP 2
Type:	Kongsberg
Reference:	1 x HiPAP 500 Kongsberg 1 x spare HIPAP duct
Systems:	2 x DGPS 1 x CyScan
Gyro Compass:	3 x Raytheon Anschutz, STD 22 Compact, Type 110 --233 NG002
MRU:	3 x Kongsberg Seatex MRU-D-001
ERN figures:	99,99,99,99 (estimated by ship designer)

NAVIGATIONAL EQUIPMENT

Radars:	1 x S band 1 x X band 1 x slave radar monitor
Autopilot:	Raytheon Anschutz Nautopilot 5000 Series
Gyro:	3 x TSS Brown
GPS/ DGPS:	2 x Furuno GP—150
Echo Sounder:	1 x Navigation echo sounder 1x Dual axis Doppler log
EI-Chart / ECDIS:	5 Raytheon Anschutz user station + 1 Raytheon Anschutz planning station (AVCS charts)
Voyage recorder	1 x Furuno VD 30001 1 x Furuno FA 150 1 x Electronic Charting, Navigation Monitoring and plan-ning station.

THRUSTER

Main propellers:	2 x steerable rotatable (360 deg) thrusters 2 x 3000 kW, 3200mm (dia)
BOW thrusters:	2 x tunnel 1500 kW 1 x retractable 1500 kw

VESSEL SPEED

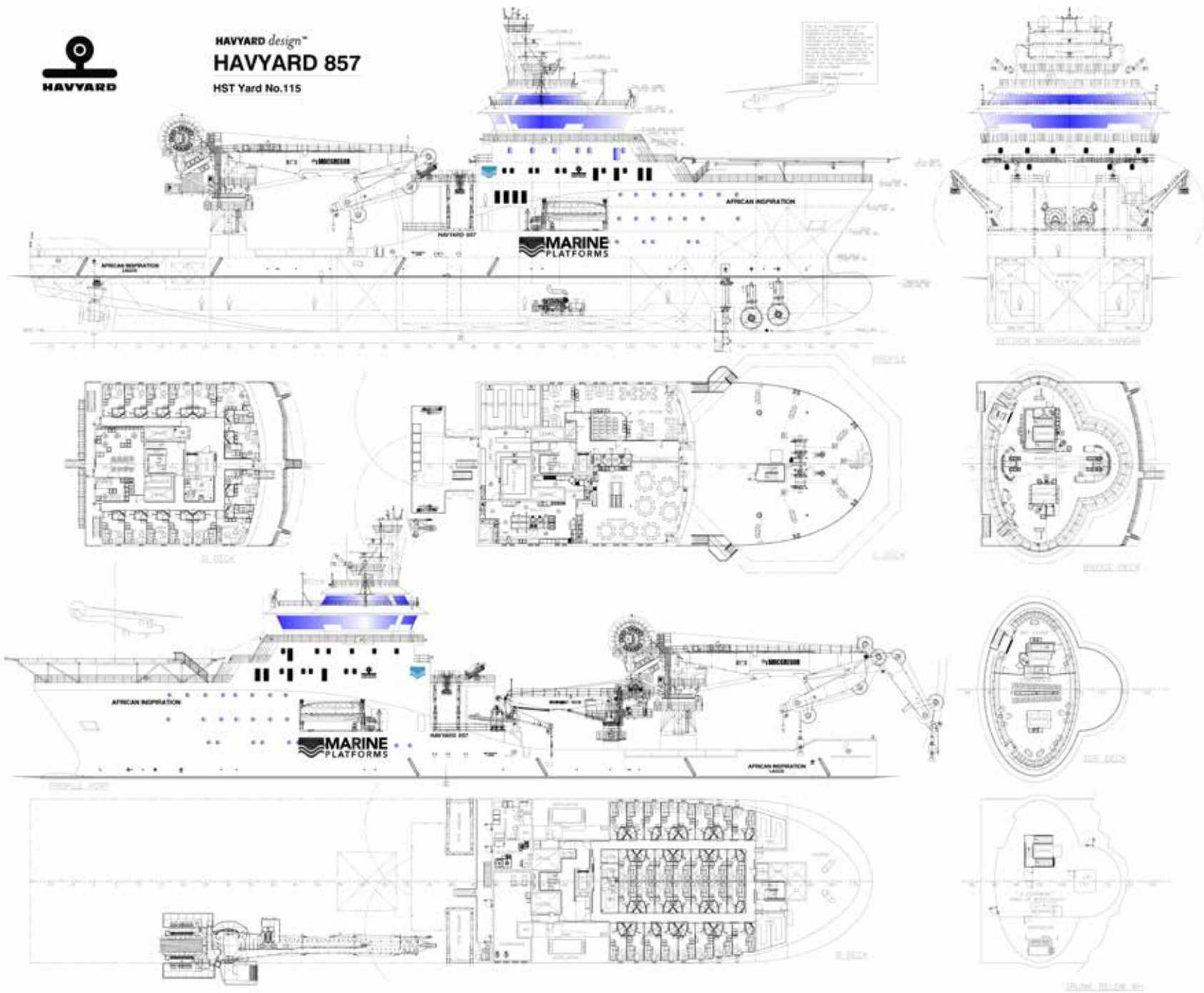
Max speed:	Approx 14,5knots
Economic speed:	Approx 11-12knots

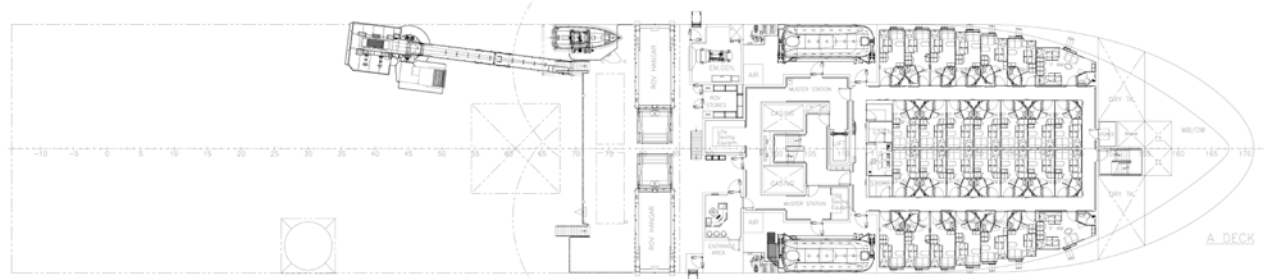
DECK EQUIPMENT

Deck Area:	1200 m ³
Deck Strength:	10 t/m ²
Main Crane:	250 tonnes at 13m outreach, 3000m / AHC, c/w man riding .
Auxiliary Crane:	20 tonnes at 10m, AHC 3000m c/w man riding ability
Cargo securing winches:	1 "Ace Winches" – 10tonnes 1 "Ace Winches" – 5 tonnes
Capstans:	2 x 10 tonnes
Windlass:	2 x 10 tonnes
Tugger Winches:	2 x 10 tonnes
Deck Crane:	2 x 2 tonnes & 10m radius knuckle jib
Life boats	2
Life rafts:	as per SPS
Fast Rescue craft:	1 x Stinger 630 jetA.1/1.20 x 6 persons

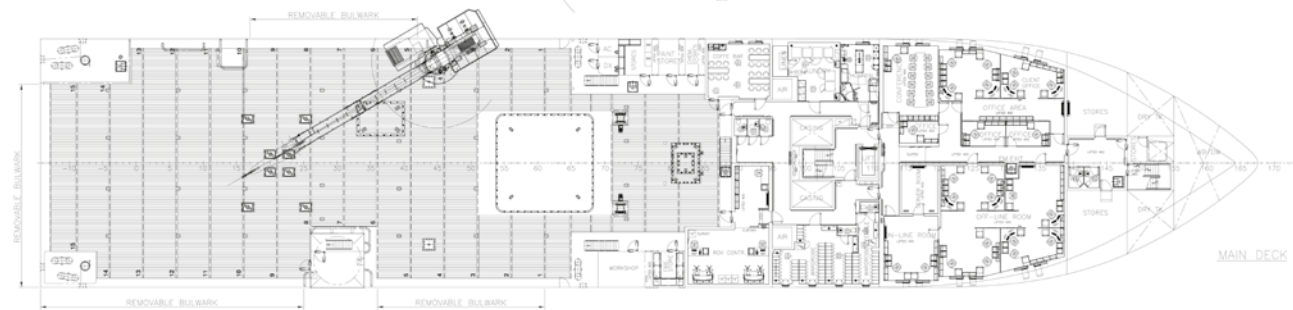


HAVYARD design™
HAVYARD 857
HST Yard No.115

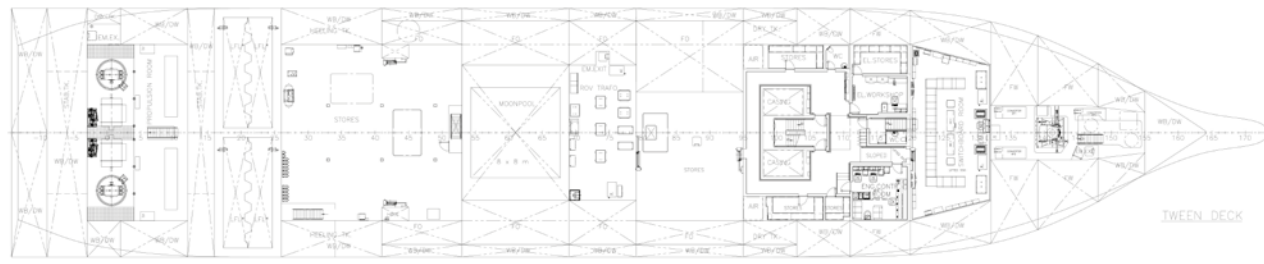




A DECK



MAIN DECK



TWEEN DECK



TANK TOP

MAIN PARTICULARS:

- LENGTH OVER ALL : 113,00 m
- LENGTH BETW. PERPS : 98,42 m
- BREADTH : 22,08 m
- DEPTH TO MAIN DECK : 10,00 m
- DEPTH TO A DECK : 13,50 m
- SCANTLING DRAUGHT : 7,50 m
- FRAME SPACING : 0,60 m
- SPEED : ~15 KNOTS

- DEADWEIGHT : ~5000 TON AT WL 7,5 m
- ACCOMMODATION : 120 PERSONS

CLASS:

DW + 1A1 - ED - SF - DYNPOS AUTR - CLEAN DESIGN - NAUT AW
 COMP - (L3) - (V3) - HELIX - SH - BS - (L)* - FF2 - SPS - H(1,8) - DK(+)

CAPACITIES:

- FUEL OIL : ~ 1800 m³
- FRESH WATER : ~ 920 m³
- WATER BALLAST/DRILL WATER : ~ 5400 m³
- METHANOL : ~ 151 m³
- MAIN DECK AREA : ~ 1200 m²
- MEZZANINE DECK AREA : ~ 225 m²

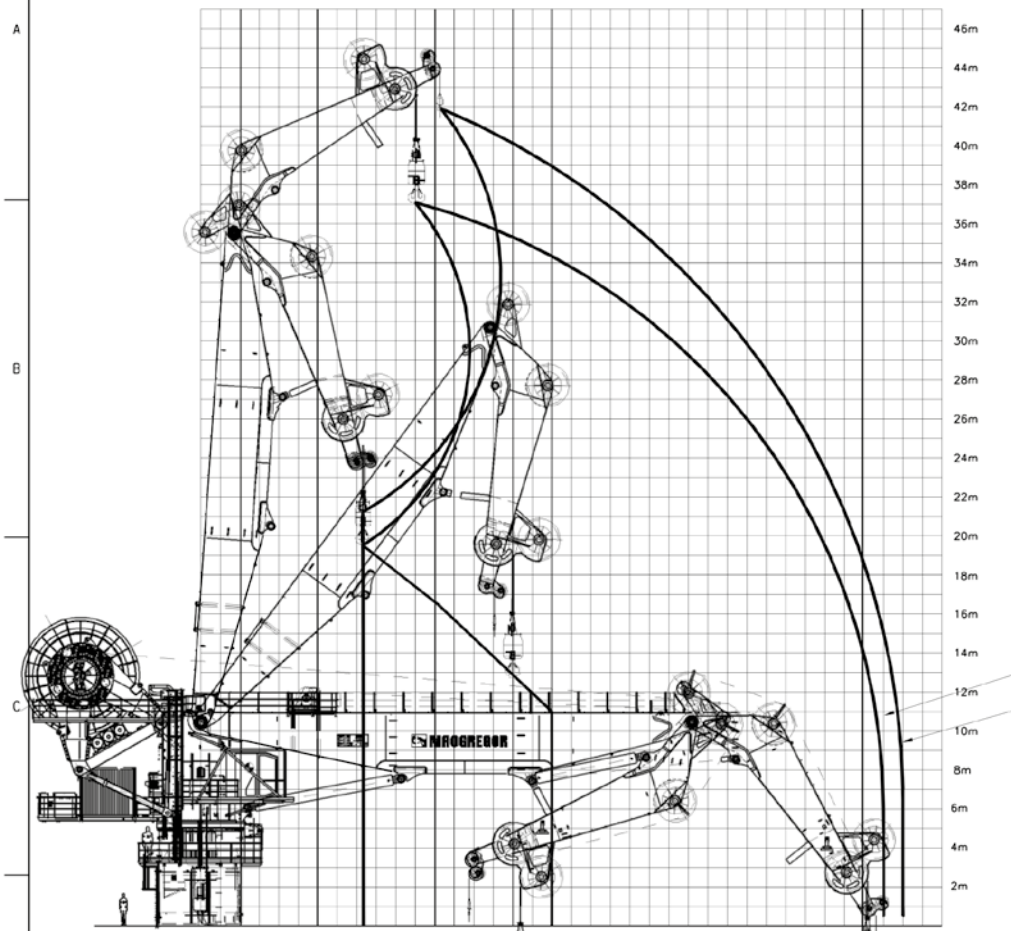
D	General update	28.01.14/DKA	E	Misc. updates	23.04.14/AL
B	General update and VO	13.09.13/01	C	DW comments & Var. Update	16.10.13/01
D	Contract GA	19.03.13/AL	A	General update	12.04.13/01
REV. CHANGED	DATE/ISSN	DATE/ISSN	REV. CHANGED	DATE/ISSN	DATE/ISSN
YARD NO/PROJECT: Havyard Ship Technology Yard no. 115					
GENERAL ARRANGMENT					
113 x 22 m SUBSEA VESSEL					
DATE	CHECKED	SCALE	FORMAT	CUSTOMER	
19.03.13	AD	1:200	AD	Marine Platforms Limited	
DRAWN	PLOTTED			Nigeria	
AD	12.04.13				
NO				962210	REV. E
HAYWARD design™				DRAWING NO. 11113-101-001	
HAYWARD DESIGN & ENGINEERING AS The Havyard Group - Havyard Design & Engineering, Havyard Ship Technology, Havyard Ship Technology Yard HAYWARD HAVYARD DESIGN & ENGINEERING HAVYARD SHIP TECHNOLOGY				YARD DRAWING NO. 115-101-001	

This document and all data disclosed herein or herewith are the confidential and proprietary property of MacGREGOR Hydramarine AS and are not to be used, reproduced or disclosed in whole or in part by or to anyone without the written permission of MacGREGOR Hydramarine AS.

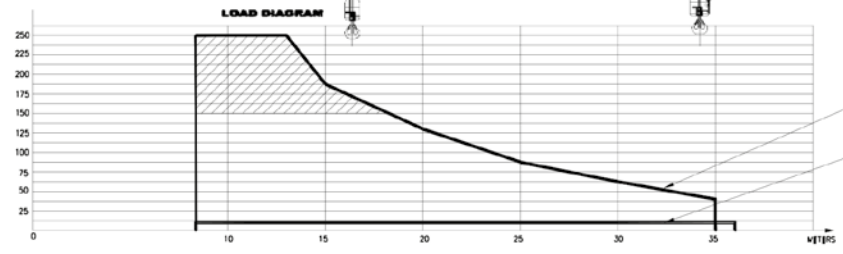
MacGREGOR Hydramarine AS
 NS/SO 2766/1
 tolerance class "medium".

Needs to comply with:
 GRADE B NS 470.

Rev.	Description	Drawn	Checked	Date
0	Working Area Diagram	SVB	DHA	05.04.13
1	UPDATED WORKING AREA DIAGRAM	SVB	JWI	07.09.13
2	UPDATED TITLE FIELD	SVB	DHA	23.06.14



MIN HOOK - SINGLE LINE
 WHP LINE - SINGLE LINE



MIN HOOK - SINGLE LINE
 Shoreboard Capacity
 WHP LINE - SINGLE LINE

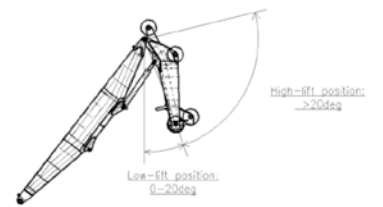
NOTES:

- THE PROVIDED LOAD CHARTS ARE BASED ON A THEORETICAL INVESTIGATION THE PRACTICAL RESPONSIBILITY FOR EACH LIFT REMAINS TO THE OPERATOR.
- LOAD CHARTS ARE VALID WHEN THE LOAD IS AIRBORNE. SEPARATE CALCULATIONS TO BE DONE WHEN ENTERING SEAWATER.
- LOAD CHARTS ARE VALID FOR SIML. SINGLE LINE. SIML IS BY THE MEANS OF SUSPENDED LOAD UNDER THE HOOK.
- NO LOAD TO BE LIFTED WITH KNUCKLE JIB CYLINDERS IN TENSION.
- MAXIMUM OPERATING WIND SPEED: 24 m/s
- MAXIMUM HEEL/TRIM: 5/2 DEG. (COMBINED)



BUFFER CONTACT OR KNUCKLE JIB IN LOW LIFT MODE REQUIRED.

LOW LIFT MODE DEFINITION:



Created by/ Date SVB 05.04.13	Scale/Format 1:250	MACGREGOR
HMC 4240 LKO 400-35 (2500-13) (100-36) AHC	Project no. SP2535-1	REV
WORKING AREA DIAGRAM	SP2535-1-R-XD-02	2

THIS IS A COMPUTER AIDED DRAWING AND MUST NOT BE ALTERED MANUALLY.

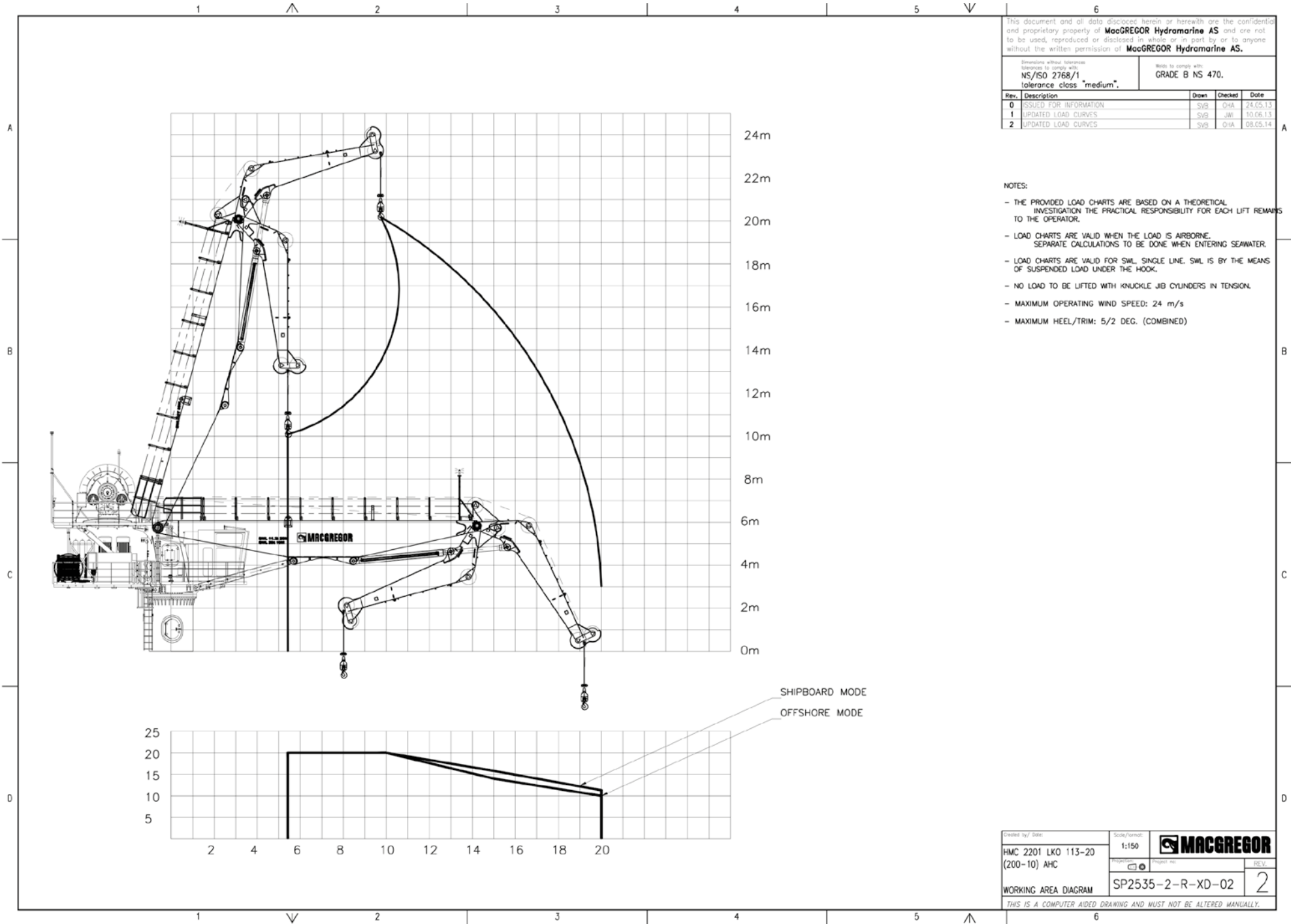
This document and all data disclosed herein or herewith are the confidential and proprietary property of **MacGREGOR Hydramarine AS** and are not to be used, reproduced or disclosed in whole or in part by or to anyone without the written permission of **MacGREGOR Hydramarine AS**.

Dimensions without tolerances
tolerances to comply with:
NS/ISO 2768/1
tolerance class "medium".

Welds to comply with:
GRADE B NS 470.

Rev.	Description	Drawn	Checked	Date
0	ISSUED FOR INFORMATION	SVB	OHA	24.05.13
1	UPDATED LOAD CURVES	SVB	JWI	10.06.13
2	UPDATED LOAD CURVES	SVB	OHA	08.05.14

- NOTES:
- THE PROVIDED LOAD CHARTS ARE BASED ON A THEORETICAL INVESTIGATION THE PRACTICAL RESPONSIBILITY FOR EACH LIFT REMAINS TO THE OPERATOR.
 - LOAD CHARTS ARE VALID WHEN THE LOAD IS AIRBORNE. SEPARATE CALCULATIONS TO BE DONE WHEN ENTERING SEAWATER.
 - LOAD CHARTS ARE VALID FOR SWL, SINGLE LINE. SWL IS BY THE MEANS OF SUSPENDED LOAD UNDER THE HOOK.
 - NO LOAD TO BE LIFTED WITH KNUCKLE JIB CYLINDERS IN TENSION.
 - MAXIMUM OPERATING WIND SPEED: 24 m/s
 - MAXIMUM HEEL/TRIM: 5/2 DEG. (COMBINED)



Created by/ Date:	Scale/Format:	MACGREGOR
HMC 2201 LKO 113-20 (200-10) AHC	1:150	
Project no.:	Project no.:	REV.
SP2535-2-R-XD-02	SP2535-2-R-XD-02	2
WORKING AREA DIAGRAM		
THIS IS A COMPUTER AIDED DRAWING AND MUST NOT BE ALTERED MANUALLY.		